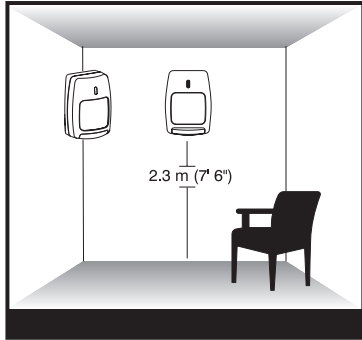


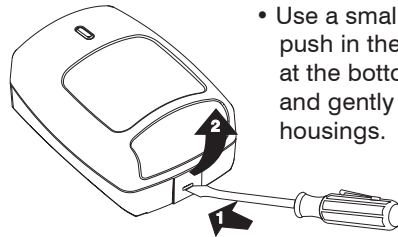
**1 Select the mounting location.**



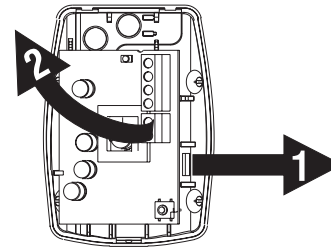
**Mounting Location Guidelines**

- 2.3 m (7'6") mounting height
- Avoid direct or reflected sunlight
- Aim sensor away from windows or heating/cooling devices
- Sensor must have a clear line-of-sight to protected area

**2 Separate the sensor housings and remove the printed circuit board (PCB).**

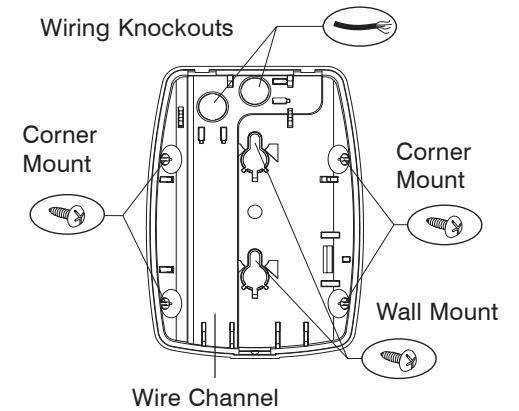


- Use a small screwdriver to push in the housing latch at the bottom of the sensor, and gently pull apart the housings.



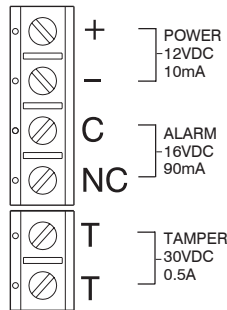
- Push outward on the PCB latch and lift the PCB out of the housing.

**3 Mount the unit.**



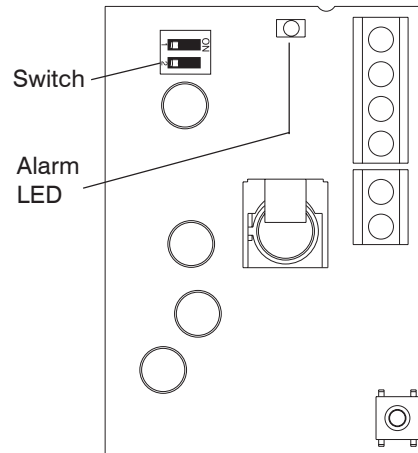
- Slide the wire through the wire channel and wire access in the back housing.
- Mount the back housing flat against a wall or in a corner.
- Replace the PCB.

**4 Wire the unit.**



- Connect wires as shown using 0.64 - 1.63 mm<sup>2</sup> (14 to 22 AWG) wire size. Observe proper polarity.

**5 Configure the sensor sensitivity.**



- Configure the IS-215T for the sensitivity best suited to the application.

SENSITIVITY	SWITCH SW2 POSITION
High (pulse count 1)	ON
Low [Normal] (pulse count 2)	OFF

**6 Walk-test the sensor.**

High Sensitivity: 2-4 Steps  
(Pulse Count 1)

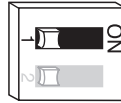


Low [Normal] Sensitivity: 3-5 Steps  
(Pulse Count 2)



**ALARM LED DISABLE**

After walk-testing the sensor, disable the alarm LED by turning Switch S1 to the OFF position.



**SPECIFICATIONS**

**Range:**

12 m x 12 m  
40' x 40'

**Power requirements:**

10 - 14 VDC, w/LED - Alarm:  
10mA max.; w/o LED - Alarm:  
7mA max.; 12 VDC  
3V peak-to-peak at nominal  
12 VDC

**Alarm relay:**

Form A SPST,  
90 mA, 16 VDC,  
15 Ohm protective resistor

**Tamper switch**

Closed with cover in place  
0.5 A, 30 VDC

**RFI immunity:**

30 V/m  
10 MHz - 1000 MHz

**PIR White light immunity:**

6,500 Lux

**PIR sensitivity:**

Switch selectable  
low [normal] (pulse count 2)  
3-5 steps

high (pulse count 1) 2-4 steps

**PIR fields of view:**

dual element,  
44 long range zones  
14 intermediate, 8 lower,  
4 look-down

**Operating temperature:**

-10° C to +55° C (14° F to 131° F)

**Relative humidity:**

5% to 95% noncondensing

**Dimensions:**

8.57 cm x 6.03 cm x 3.81 cm  
(3-3/8" H x 2-3/8" W x 1-1/2" D)

**Weight:**

66.62 g (2.35 oz)  
Packaged Product is 92.14 g  
(3.25 oz)

**Approvals/listings:**

CE  
cULus  
C-Tick  
EN 50131-1  
Security Grade 2  
Environmental Class II

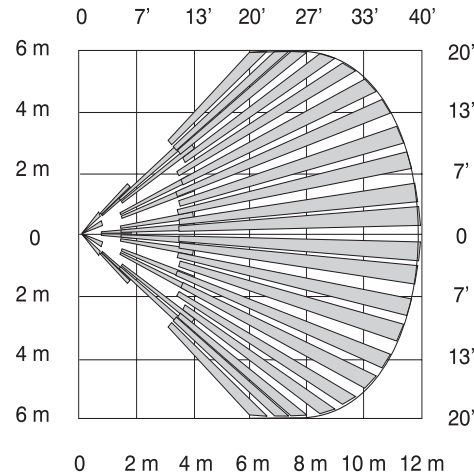
**Important:** For UL Certificated installations, the IS215T must be connected to a UL listed power supply or UL listed control unit capable of providing a **minimum of four hours** of standby power.

Suitable for connection to an EN 60950 Class II Limited Power Source.

**DETECTION PATTERNS**

**TOP VIEW**

**Wide Angle Lens**



**SIDE VIEW**

**Wide Angle Lens**

